

**Heritage Coast**  
Sunderland-Durham-Hartlepool

[www.durhamheritagecoast.org](http://www.durhamheritagecoast.org)

@DurhamCoast

# Heritage Coast and the Tourism Offer

## Environment & Sustainable Communities Overview and Scrutiny Committee

15<sup>th</sup> January 2019



**Heritage Coast**  
Sunderland-Durham-Hartlepool

[www.durhamheritagecoast.org](http://www.durhamheritagecoast.org)

@DurhamCoast

# Eleven months on – where are we now

---

1. Landscape and Seascape
2. Nature Conservation
3. England Coast Path
4. Water



**Heritage Coast**  
Sunderland-Durham-Hartlepool

[www.durhamheritagecoast.org](http://www.durhamheritagecoast.org)

@DurhamCoast

# Landscape - Seascape

---

- SeaScapes
- Protected Landscape
  - Our Heritage Coast extension
- Natural England's Living Coast
- Plymouth National Marine Park
- Marine Management Organisation's Pathfinder



**Heritage Coast**  
Sunderland-Durham-Hartlepool

[www.durhamheritagecoast.org](http://www.durhamheritagecoast.org)

@DurhamCoast



Supported by  
**The National Lottery**<sup>®</sup>  
 through the Heritage Lottery Fund





(c) Nic Faulks

# A SHARED HERITAGE

Photos R1 L-R: INCA, Heritage Coast Partnership (2); R2 L-R: Sunderland Maritime Heritage, Nic Faulks, Healey Hero

# Seascape over Time

Telling the incredible story from Zechstein Sea, through ice ages, wars and industrial history up to the present day



# Revealing Hidden Heritage

Using innovative methods and participative approaches  
engaging beyond our usual audiences





# Accessing the Sea

**Improving access, removing barriers and allowing local communities to make full use of our coastal and marine assets**

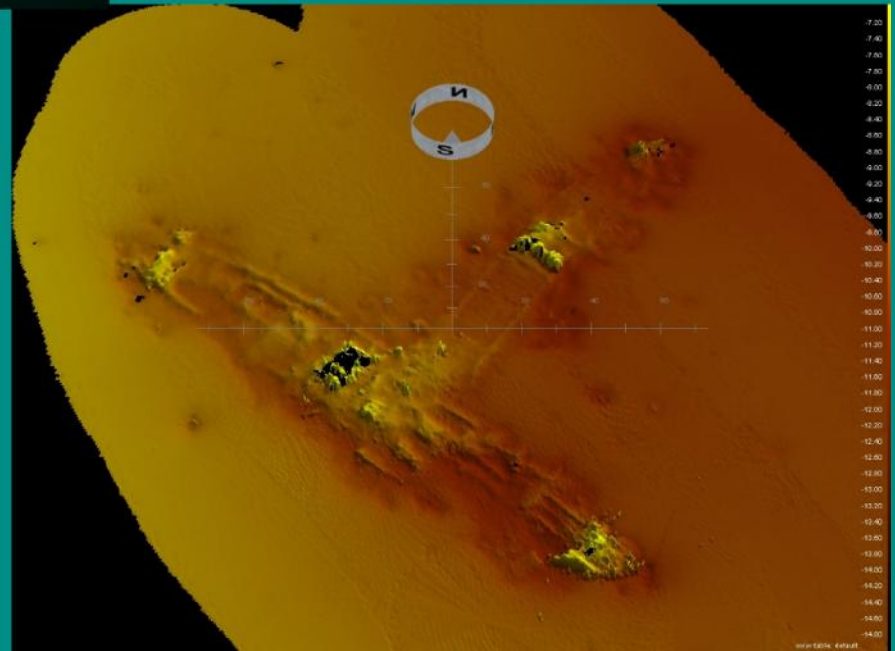


# Coastal Champions

Opportunities for learning, training and enjoyment engendering a stewardship of this unique seascape for generations to come



# Shipwrecks



San Dorio



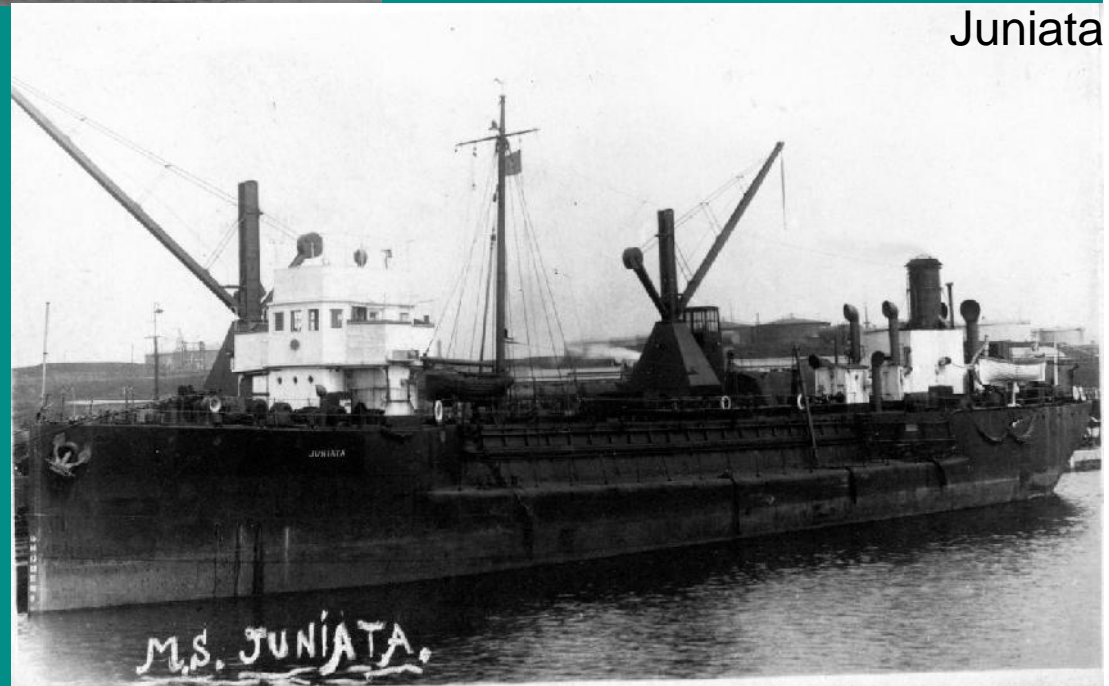
**RFA Creosol**  
torpedoed by U-boat  
lain off coast near  
Seaham for over 100  
years

**One of the UK's  
most important  
shipwrecks**

**One of just 36 military  
wrecks designated under  
the Protection of Military  
Remains Act.**

**Divers may visit, but not  
enter the wreck, remove or  
interfere with items without  
permission**

Juniata



4 year scheme

2020 - 2024



Supported by

**The National Lottery**<sup>®</sup>  
through the Heritage Lottery Fund



# Follow the SeaScapes Journey

[www.exploreseascapes.co.uk](http://www.exploreseascapes.co.uk)



@tynetotees



@tynetotees

**Thank you for listening!**



Supported by

**The National Lottery**<sup>®</sup>  
through the Heritage Lottery Fund



# Nature Conservation

---

- Coastal Access and Mitigation Measures
  - Coast (Ian Graham, Sunderland)
  - Durham (Similar actions to come)
  - Crimdon (With Hartlepool)
- Little terns
- Seasearch
- Local Nature Reserve Improvements
  - Easington Colliery



**Heritage Coast**  
Sunderland-Durham-Hartlepool

[www.durhamheritagecoast.org](http://www.durhamheritagecoast.org)

@DurhamCoast



**Heritage Coast**  
Sunderland-Durham-Hartlepool

[www.durhamheritagecoast.org](http://www.durhamheritagecoast.org)

@DurhamCoast



# England Coast Path/Access

---

- England Coast Path National Trail
  - Around the coast of England by 2020
  - Partnership now includes South Tyneside and Stockton
  - Path condition, counters and signage standards
  - Small grant from Natural England
  - Supported by website – free promotional entry to local businesses
- Living Coast



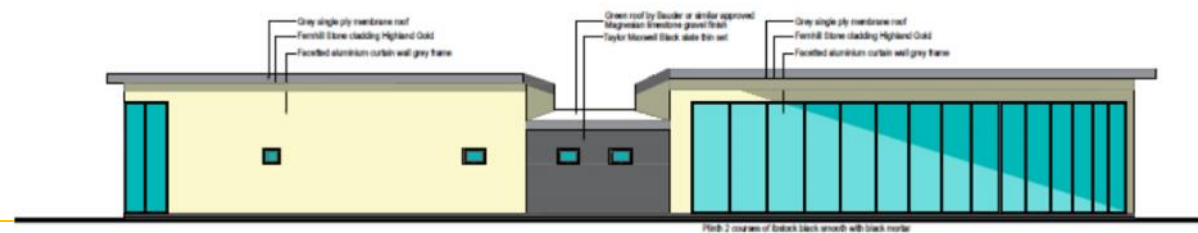
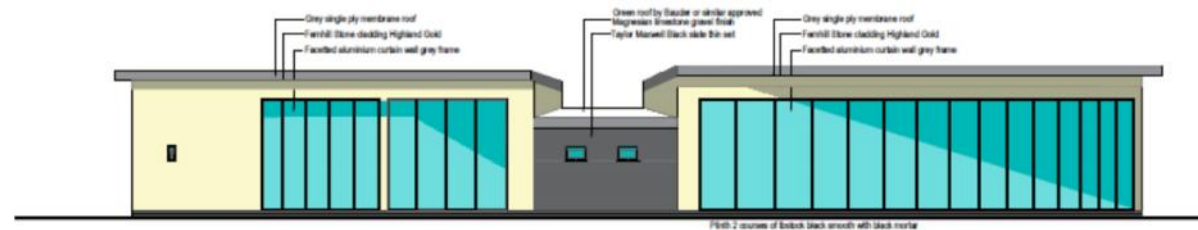
**Heritage Coast**  
Sunderland-Durham-Hartlepool

[www.durhamheritagecoast.org](http://www.durhamheritagecoast.org)

@DurhamCoast

# England Coast Path/Access

- Crimdon Facilities bid to Coastal Communities Fund invited to Phase 2 - £1.8million



**Heritage Coast**  
Sunderland-Durham-Hartlepool

[www.durhamheritagecoast.org](http://www.durhamheritagecoast.org)

@DurhamCoast



# Water

---

- Bathing Water assessment for 2019
  - Seaham Hall - Good
  - Seaham - Excellent
  - Crimdon - Excellent
  - Signage
- Coastal Streams Partnership
  - Sub Catchment Delivery Group
  - Covers Magnesian Limestone area including Wear Estuary
  - Castle Eden Catchment Improvement Project
- North East Water Hub



**Heritage Coast**  
Sunderland-Durham-Hartlepool

[www.durhamheritagecoast.org](http://www.durhamheritagecoast.org)

@DurhamCoast

# Thank You

Feel free to contact me with any questions at any time

[E: Niall.benson@durham.gov.uk](mailto:Niall.benson@durham.gov.uk)

T: 03000 268130



**Heritage Coast**  
Sunderland-Durham-Hartlepool

[www.durhamheritagecoast.org](http://www.durhamheritagecoast.org)

@DurhamCoast